



VIEW System Upgrades

Typical Upgrade Kits Include:

- New system controller with quad core processor, 4GB memory and solid state HDD
- Digital, megapixel camera(s)
- Optional color megapixel camera(s)
- Digital camera interface
- Latest* VMS or Elements® software
- On-site installation and calibration by a VIEW field service engineer
- 1-year calibration and software maintenance agreement
- 6-month warranty on installed components

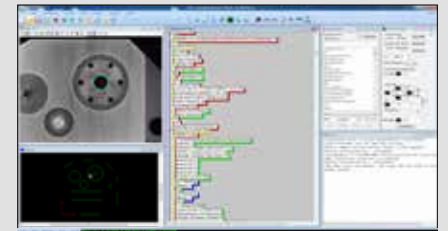
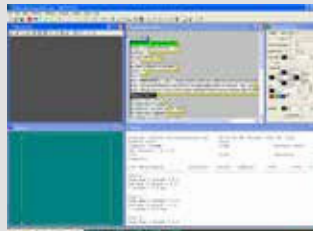
Options:

- QVI® Through-the-lens (TTL) Laser
- LED Surface and Profile Illuminator
- Latest generation multi-color Programmable Ring Light (PRL)
- Extended Maintenance Agreements

* Software version may be dependent on system configuration / hardware and Windows operating system level.

Enhance system performance with the latest cameras, controller and software.

Systems	Benchmark 250 300 450
	Summit 450 600
	Pinnacle 250



Before



After



VIEW System Upgrades

VMS Upgrade Benefits

New features in VMS 8 include:

Updated Screen Layout with Ribbon Interface

New and Updated Dialogs

- Easy to use dialogs for using advanced image acquisition and Area Multi Focus (AMF)
- Added option for zero length scan and improved the layout for basic and advanced laser scans

New Line Width Finder Tool

- The new Line Width is a convenient function for measuring the distance between two parallel edges

Part ID and Factory Interface Functions

- Optical Character Recognition (OCR) to enable automatic ID of parts based on their ASCII labels
- Bar Code reading to enable automatic ID of parts using images from the machine

Motion Control Enhancements

- Simultaneous X,Y,Z vector moves are now enabled, reducing positioning time
- Dual axis drive & scale systems are now supported
- Software warm start – enables re-start of VMS without automatically initializing stages

2D Heat Map Thresholds for Blob and Histogram Tools

Image Filtering & Feature Calculation Enhancements

VMS 9 includes all the new functionality in VMS 8 and additional features including:

QVI Portal Compliant

- Runs in the QVI Portal environment, allowing it to be used interchangeably with other QVI metrology software.

Compatibility with OGP SmartScope Models

- Operates with OGP SmartScope® Flash / CNC, and ZIP multisensor systems.

New Image Processing Dialogs

- Easy to use dialogs for image stitching and extended depth of field image (EDFI)
- Image area of Interest (AOI) can now be defined through a simple dialog box

Advanced Call Functions

- The Advanced Call Procedure (ACP) dialog combines the function Help, object names variables and the call procedure dialog into a single dialog box featuring drop downs to select variables and entry of constants.

New Temperature Compensation Module

- Integrated USB temperature sensor monitoring from one or more temperature sensors.

Display and Evaluation Tools

- Line defects detection
- Blob ID by area, size or position
- Improved masking functionality



1711 West 17th Street
Tempe, AZ 85281
Phone: (480) 295-3150 • (877) 767-VIEW (8439)
Fax: (480) 889-9059
Email: service@viewmm.com
www.viewmm.com

