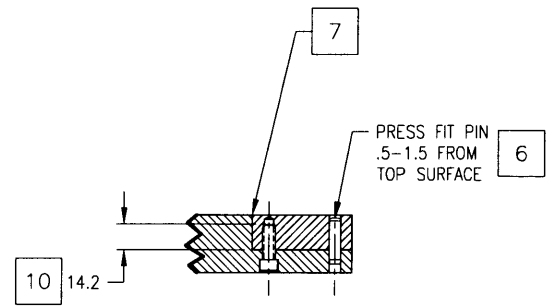
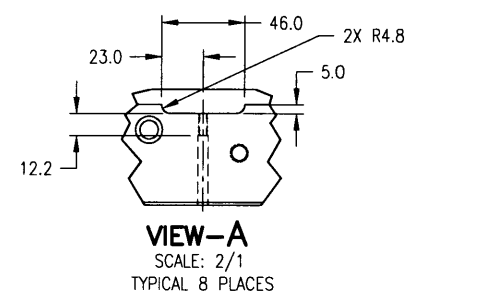
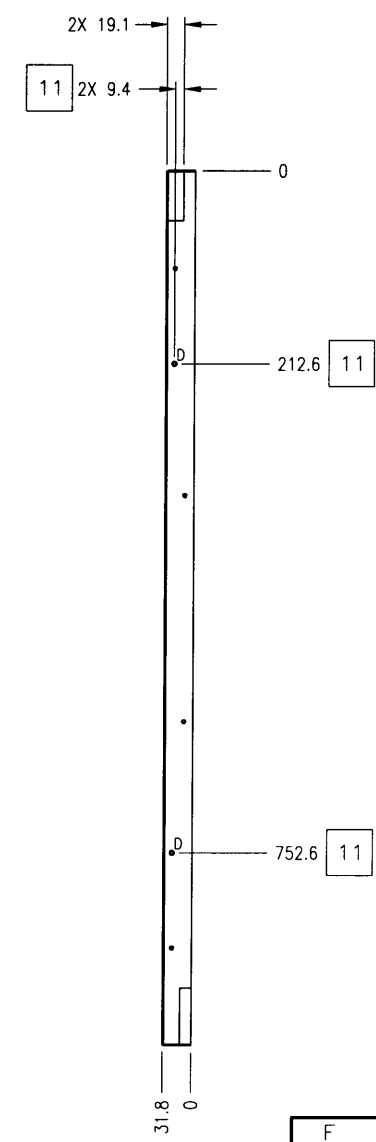
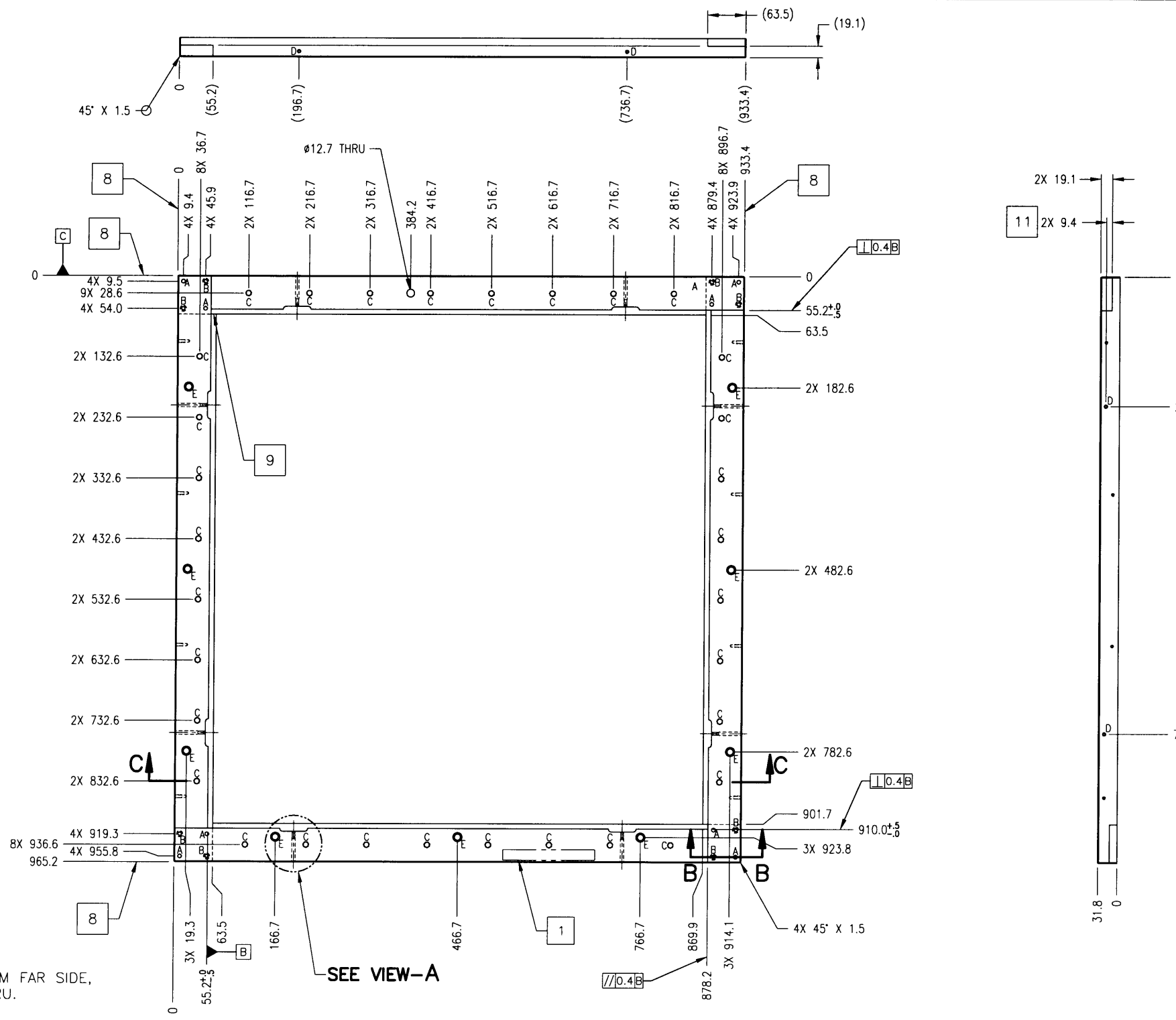


THIS DRAWING IS THE PROPERTY OF VIEW ENGINEERING, INC. AND MAY NOT BE REPRODUCED OR COPIED IN WHOLE OR IN PART, EXCEPT TO SPECIFY, FOR PURPOSES OF REPAIR, PRODUCTION, OR MANUFACTURING PURPOSES WITHOUT THE WRITTEN PERMISSION OF VIEW ENGINEERING, INC.

REVISIONS				
LET.	ECO NO.	BY	DATE	CHK.
A	F01028	RMG	2/2/01	F.L.A.
B	01176		8/31/01	F.L.A.



**SECTION B-B**  
SCALE: 2/1  
4 AS SHOWN AND 4 WITH  
HARDWARE MIRRORED  
(8 PLACES TOTAL)

REF DES	QTY	NOTE
F	8	10-24 UNC-2B $\nabla$ 19.1
E	9	$\nabla$ Ø 11.1 THRU $\nabla$ Ø 15.9 $\nabla$ 22.4
D	8	Ø 4.0 THRU $\nabla$ Ø 5.6 $\nabla$ 0 DEPTH SHOWN 10-32 UNF-2B T-RJ
C	32	M10x1.5 COARSE FREE RUNNING THREADED INSERT, HELICOIL P/N 1084-10CN100
B	8	Ø 7.1 $\nabla$ 19.1 $\nabla$ Ø 10.3 $\nabla$ 7.1 1/4-20 UNC-2B $\nabla$ 26.9
A	8	Ø 6.327-6.339 THRU

**HOLE CHART**

UNLESS OTHERWISE SPECIFIED: DIMENSIONING & TOLERANCING IN ACCORDANCE WITH ASME Y14.5M-1994 UNTOLERANCED DIMENSIONS ARE BASIC GENERAL TOLERANCE: MACHINED HOLE LOCATOR TOLERANCE: MACHINED SURFACES 1.60/ OR BETTER ALL DIMENSIONS AND TOLERANCES APPLY TO FINISHED (PLATED) PART	APPROVALS DATE 1-18-01	FILE 1-18-01
---	------------------------------	-----------------

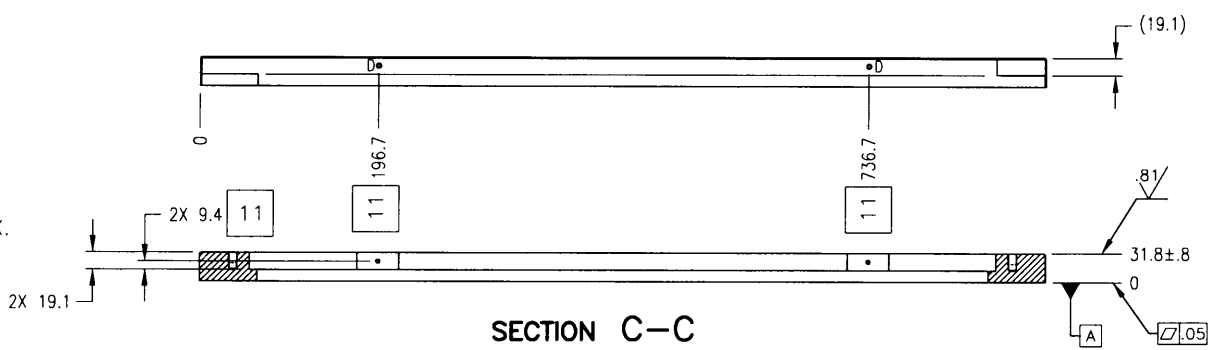
FRAME, OBS PLATFORM, 30 X 32

METRIC

REMOVE ALL SHARP EDGES

SCALE: 1/4" = 1" (SEE 2)

VIEW Engineering, Inc.  
A Quality Vision International Company

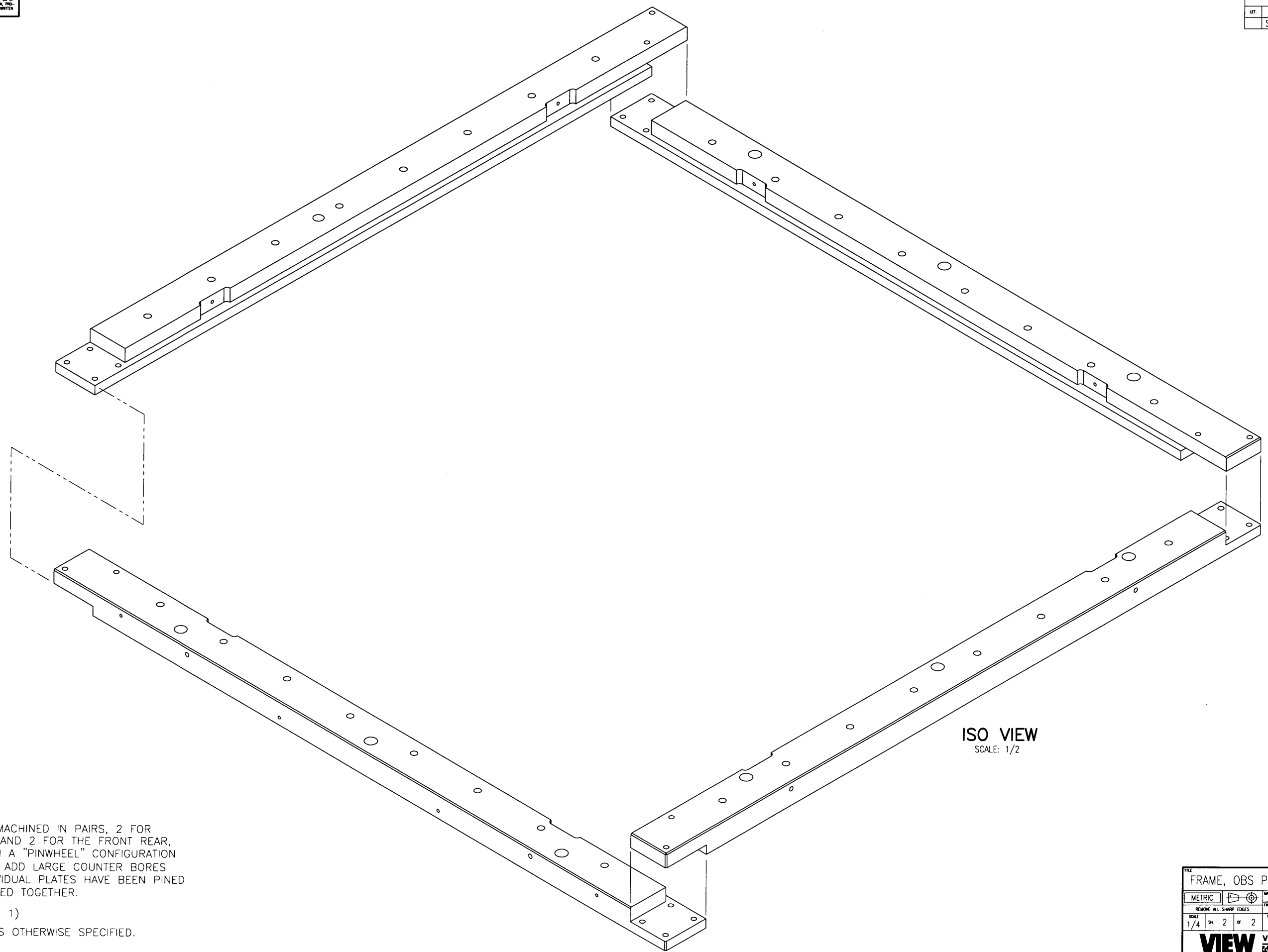


**SECTION C-C**

- 12 (SEE SHEET 2)
- 11 THIS DIMENSION AND CALL OUT ALSO APPLIES TO OPPOSITE SIDE.
- 10 ALL 1/4-20 HOLES ARE TAPPED FROM FAR SIDE, AND PILOT HOLES NOT TO BREAK THRU.
- 9 NO STEPS BETWEEN MEMBERS, THIS SIDE, ALL 4 CORNERS.
- 8 THIS SURFACE TO BE GROUND FLUSH.
- 7 ALL GAPS TO BE FROM .00-.13 MAX.
- 6 REAMED HOLES TO BE FREE OF FINISH.
5. ALL INTERNAL RADII TO BE .25 MAX.
4. ALL DIMENSIONS APPLY AFTER FINISH.
3. ALL HOLES TO BE FREE OF PARTICULATES.
2. BREAK SHARP EDGES & CORNERS .25 MAX.
- 1 IDENTIFY WITH PART NO. & REV LTR APPROX WHERE SHOWN.
- NOTES** : UNLESS OTHERWISE SPECIFIED.

THIS DRAWING IS THE PROPERTY OF VIEW ENGINEERING, INC. AND MAY NOT BE REPRODUCED OR COPIED IN WHOLE OR IN PART, DISCLOSED TO OTHERS, NOR EMPLOYED FOR DESIGN, PRODUCTION, OR MANUFACTURING PURPOSES WITHOUT THE WRITTEN PERMISSION OF VIEW ENGINEERING, INC.

REVISIONS				
LET.	ECO NO.	BY	DATE	CHK.
SEE SH 1				



12 PARTS TO MACHINED IN PAIRS, 2 FOR THE SIDES AND 2 FOR THE FRONT REAR, ARRANGE IN A "PINWHEEL" CONFIGURATION AS SHOWN. ADD LARGE COUNTER BORES AFTER INDIVIDUAL PLATES HAVE BEEN PINED AND SCREWED TOGETHER.

(SEE SHEET 1)

NOTES : UNLESS OTHERWISE SPECIFIED.

ISO VIEW  
SCALE: 1/2

FRAME, OBS PLATFORM, 30 X 32				
METRIC		UNITS		
REMOVE ALL SHARP EDGES				
SCALE	SH	OF	REV	REV
1/4	2	2	D	B
			DATE	REV
			2111170	
<b>VIEW</b>		VIEW Engineering, Inc.		
A Quality Vision International Company				

*R.P. [Signature]*