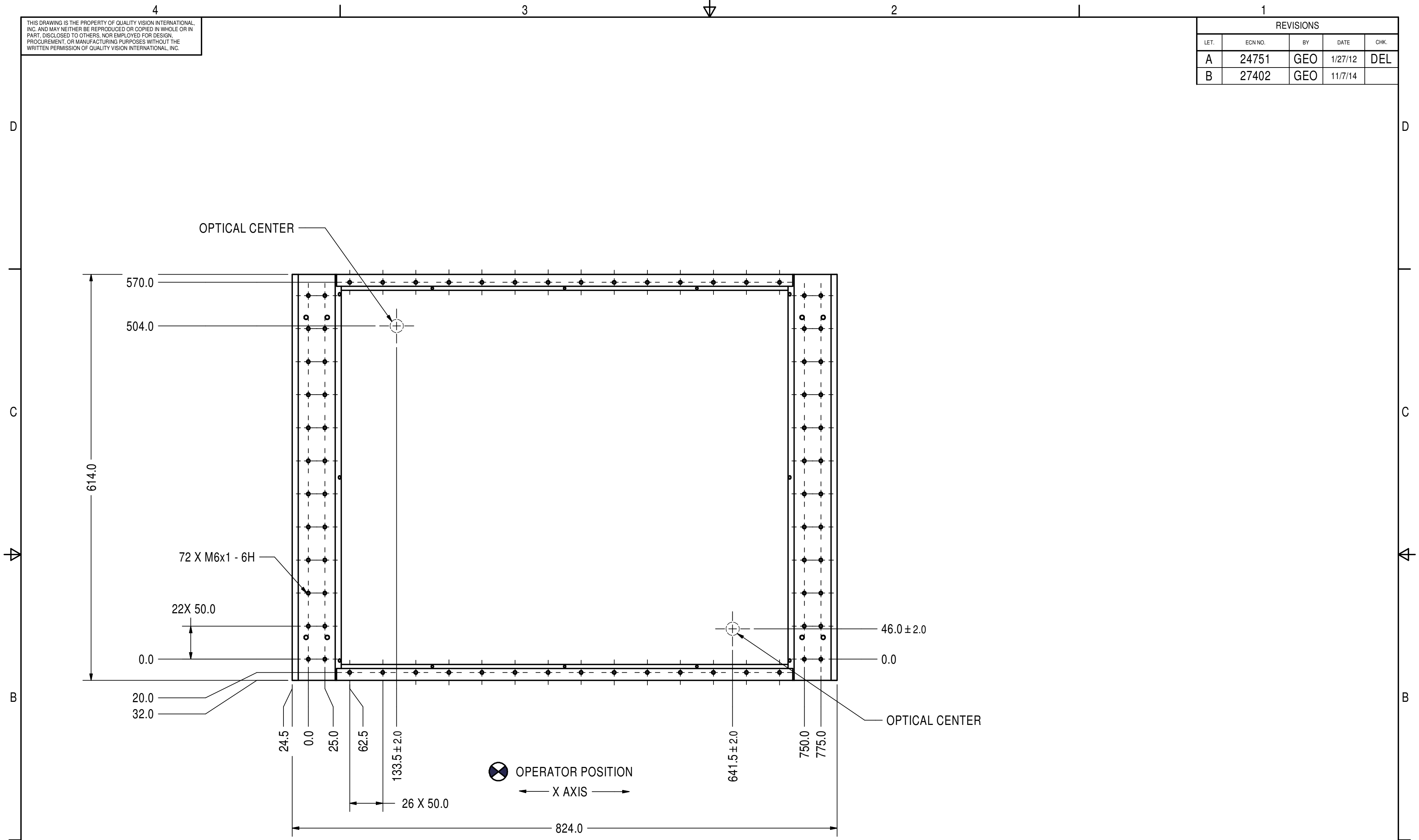


THIS DRAWING IS THE PROPERTY OF QUALITY VISION INTERNATIONAL, INC. AND MAY NEITHER BE REPRODUCED OR COPIED IN WHOLE OR IN PART, DISCLOSED TO OTHERS, NOR EMPLOYED FOR DESIGN, PROCUREMENT, OR MANUFACTURING PURPOSES WITHOUT THE WRITTEN PERMISSION OF QUALITY VISION INTERNATIONAL, INC.

REVISIONS				
LET.	ECN NO.	BY	DATE	CHK.
A	24751	GEO	1/27/12	DEL
B	27402	GEO	11/7/14	



WORKTABLE STAGE
 FOR SMARTSCOPE-2 500 AND
 ⊕ BENCHMARK 450
 OPTICAL CENTERS OF VIEWING AREA
 FOR X AXIS 20" (508MM)
 FOR Y AXIS 18" (458MM)

<small>UNLESS OTHERWISE SPECIFIED: DIMENSIONING & TOLERANCING IN ACCORDANCE WITH ASME Y14.5M-1994 ALL DIMENSIONS ARE IN MILLIMETERS UNTOLERANCED DIMENSIONS ARE BASIC GENERAL TOLERANCE: MACHINED HOLE LOCATION TOLERANCE: MACHINED SURFACES 1.60 OR BETTER ALL DIMENSIONS AND TOLERANCES APPLY TO FINISHED (PLATED) PART</small>	APPROVALS	DATE	TITLE	
	DRAWN	GEO	1/27/2012	WORKTABLE - LAYOUT 500 SS2/BM450
	CHECKED	DEL	2/15/2012	METRIC
	APPROVED	DEL	2/15/2012	MATERIAL ---
JOB NO. 4193		FINISH ---		
RELATED DOCUMENTATION		REMOVE ALL SHARP EDGES		
528702, 528704		SCALE 1/4	SH. 1 OF 1	
528705, 532177		SIZE C	DWG. NO. 536028	
DO NOT SCALE DRAWING		REV. B		

Quality Vision International, Inc.
 850 Hudson Ave. Rochester, NY 14621